

CIRCLE LAKE Association

Upcoming events

Annual Picnic

Don't forget! The annual picnic and meeting will be Saturday July 24th at Rodger Kluzak's house. (3774 Culver Ct)



Upcoming Association meetings:

Everyone is welcome to attend the monthly CLA board meetings. Our July meeting will be held at the picnic. All other board meetings are held at the Forest Township Town Hall. Saturday July 24th at 3:00 PM (Rodger's house) Monday, August 16 at 7:00 PM (Town hall) Monday September 13 at 7:00 PM (Town hall)



Taking the First Step to Improve Circle Lake Water Quality

Circle Lake Association is taking a major step toward improving the water quality of our lake. In order to do this, we must first get a better understanding of the specific problems Circle Lake has and the best way to fix them. We have hired Steve McComas of Blue Water Science from St. Paul, Minnesota to develop a Lake Management Plan for Circle Lake. Steve McComas has been working on lakes and streams for 25 years, specializing in lake management and lake restoration projects with an emphasis on innovative solutions to lake-related challenges. Steve McComas is the author of "Lake and Pond Management Guidebook" and also appears on a popular radio show as the "Lake Detective."

Steve will be taking measurements, performing in-depth surveys and studies, and developing models to give us a better understanding of our lake. He will also provide a prioritized list of projects to work on. A lake management plan will benefit us when we are working with government officials or applying for grants. Come to our July 24 annual meeting/ picnic to hear an update about how we're coming on the Lake Improvement Fund and on building the lake management plan.



How you can help

Everyone can help in improving and maintaining the water quality of Circle Lake. Here some things you, as a lakeshore homeowner, can do today to make Circle Lake better tomorrow.

1. **Keep harmful species out** Be careful not to introduce potentially harmful vegetation or species to Circle Lake on your watercraft. Before putting watercraft into the lake, remove all animal and plant species. Also, avoid adding non-native plants to your shoreline.
2. **Use phosphorus-free fertilizers** If you need to fertilize your lawn, consider using phosphorus-free varieties. Phosphorous is the nutrient that stimulates algae growth in lakes. Phosphorus-free fertilizers are readily available. Just look for a 0 in the second number in the package formula (e.g. 15-0-10)
3. **Maintain your septic system** A malfunctioning septic tank system can not only deliver unwanted materials to the lake, but also contaminate nearby drinking water wells. Have your septic system checked regularly by a professional and make sure you understand your part in maintaining your system.
4. **Add native plants** Native vegetation along your shoreline can create a natural buffer that will filter pollutants in runoff water. Native plants will grow well and should need little care.
5. **Help fund our efforts** By becoming a member or contributing to the Lake Improvement Fund



Lake Improvement Fund

Good news - the Internal Revenue Service has approved our association's application for federal tax-exempt status under Internal Revenue Code section 501(c)(3), meaning that any contributions to Circle Lake Association after June 27, 2009 are deductible.

This news comes as good timing, as we will shortly start having to make payments on the lake management plan that we are creating with the help of consultant Steve McComas. For this reason, we are now asking that those who made pledges to the Lake Improvement Fund now send in their payment.

Checks should be made payable to Circle Lake Association and given to a board member or sent to Circle Lake Association, P.O. Box 147, Northfield, MN 55057.

We would love to see participation in this effort as broad-based as possible and encourage anyone who has not yet pledged to do so now (see enclosed info).

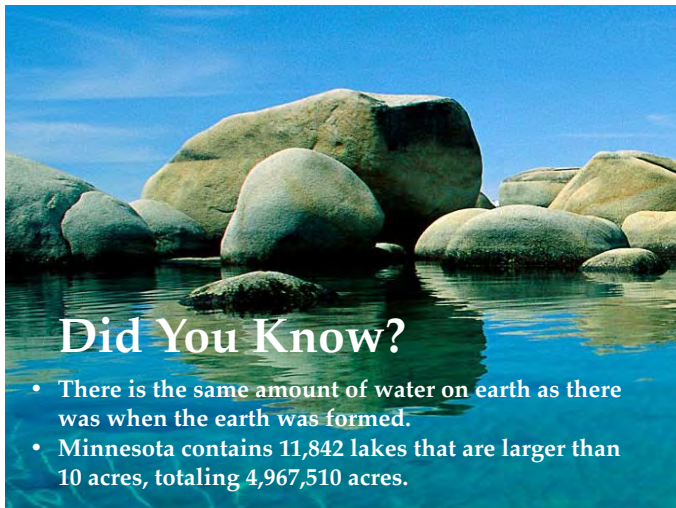
Join the Association or Renew your Membership!

Name: _____
 Address: _____

 Phone: _____
 Email Address: _____



We have been glad to see an uptick in association membership over the past year. We have changed our association's fiscal year to align with the calendar year starting on January 1, 2011, so that residents no longer have any confusion about what "year" it is for the lake association. For the "short year" of July 1 through December 31, 2010, membership dues are \$15 (per household). At the July 24 annual meeting/picnic, we'll discuss how much the dues should be for 2011 and going forward. **To join or renew for the rest of 2010, please fill out the information below and make your \$15 check payable to Circle Lake Association and bring it to the annual meeting, give it to a board member, or mail it to Circle Lake Association, P.O. Box 147, Northfield, MN 55057.** If you have any questions about this, contact Treasurer Bob Gilbertson (645-4327, or BGilbertson@GreeneEspel.com).



Did You Know?

- There is the same amount of water on earth as there was when the earth was formed.
- Minnesota contains 11,842 lakes that are larger than 10 acres, totaling 4,967,510 acres.



Vegetation Survey

The Invasive Species department of the MN DNR performed a Point-Intercept Survey of Circle Lake on June 24, 2010. Over 100 points on the lake were sampled for Curly-leaf Pondweed as well as Native plants. The detailed report can be found on our website: <http://circlelake.org/>

Rain Gardens

Rain gardens benefit our lake because they hold storm water runoff and allow it to soak into the ground naturally. This helps reduce the amount of pollution that gets into our lakes and waterways. Perhaps you've heard about rain gardens and want to learn more or are ready to add one to your landscape. The websites listed below are a few that may help.

- <http://bluegreenthumb.com/raingardens.html>
- <http://minnesotaraingardens.net/>
- <http://www.dnr.state.mn.us/volunteer/mayjun04/raingardens.html>



Lake Owners Survey Results

Thanks to everyone who filled out a survey and sent it back to us. Your opinions help us decide on the actions we take as a board. If you would like to see the detailed results of the survey, please visit the Circle Lake Association website. It's not too late to give us your feedback. If you have not yet returned your lake owners survey take a few minutes to fill it out and mail it back to Circle Lake Association, P.O. Box 147, Northfield, MN 55057 or give it to any board member.



New CLA Website

If you haven't visited the Circle Lake Association website in a while, now is a good time to check it out. We are making improvements and continually adding valuable information. Come see current happenings, association meeting minutes and updates on the lake improvement projects. Let us know what you think!

<http://circlelake.org/>

